



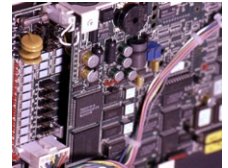
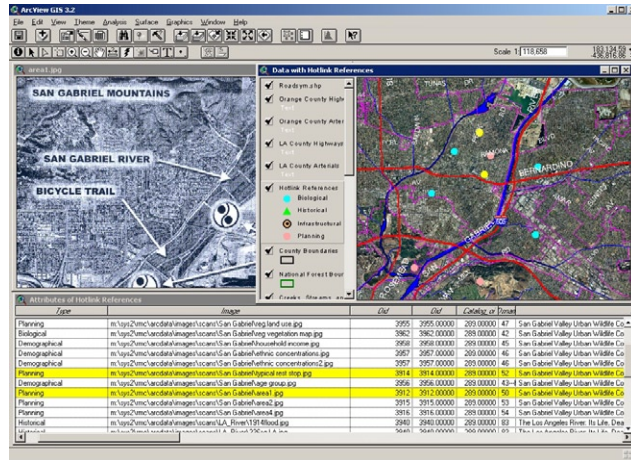
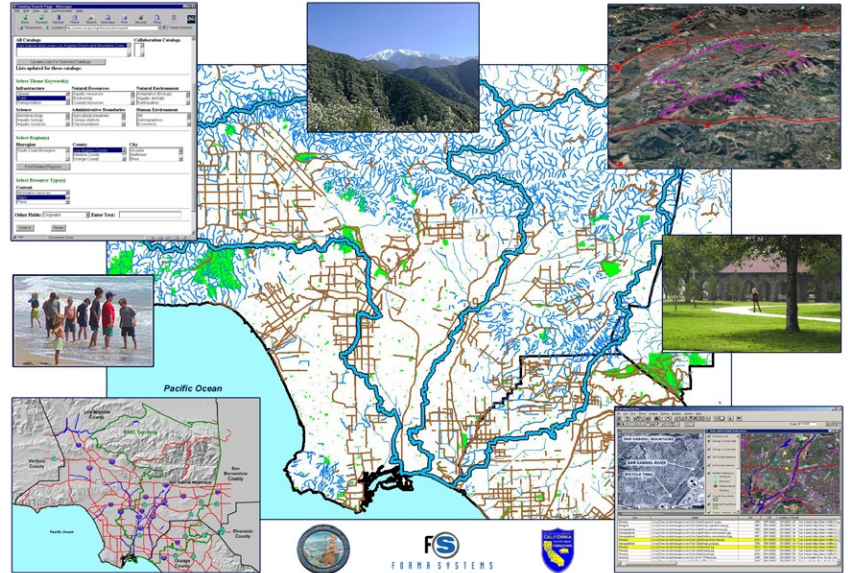
FORMA Systems developed and delivered an operational GIS system to the San Gabriel and Lower Los Angeles Rivers and Mountains Conservancy (RMC).

Upon the completion of the data collection and analysis for the project, the GIS system contained 45 Gigabytes of information and was documented in great detail with a data dictionary totaling over 250 pages and delivered to the RMC. The entire GIS system including data, maps, and documentation was loaded onto an external hard drive and formatted to provide an easy transition for setup and installation on the RMC and other project team systems.

The other project team members were the California Department of Fish and Game, Los Angeles County Public Works, and other private consultants.

The benefits of developing such a large and integrated GIS system are demonstrated as GIS mapping and analysis continues to improve the quality of life by identifying opportunities and finding solutions which can be used by organizations, such as the RMC, to create a better environment for our community.

The development, delivery, and installation of the GIS system was completed within six - months time.



- Data Dictionary**
- GIS Implementation**
- Metadata**
- Systems Deployment**
- Systems Development**
- Systems Installation**

