



VA Visual Analysis

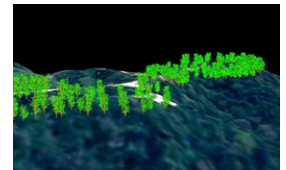
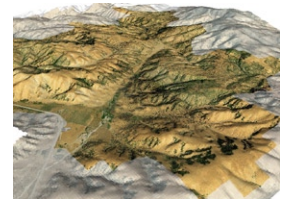
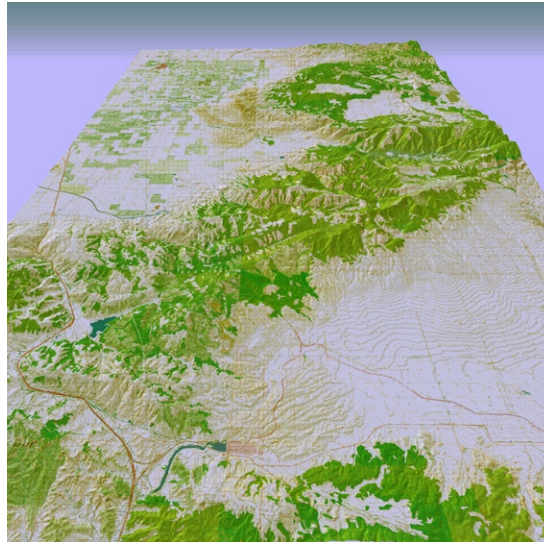
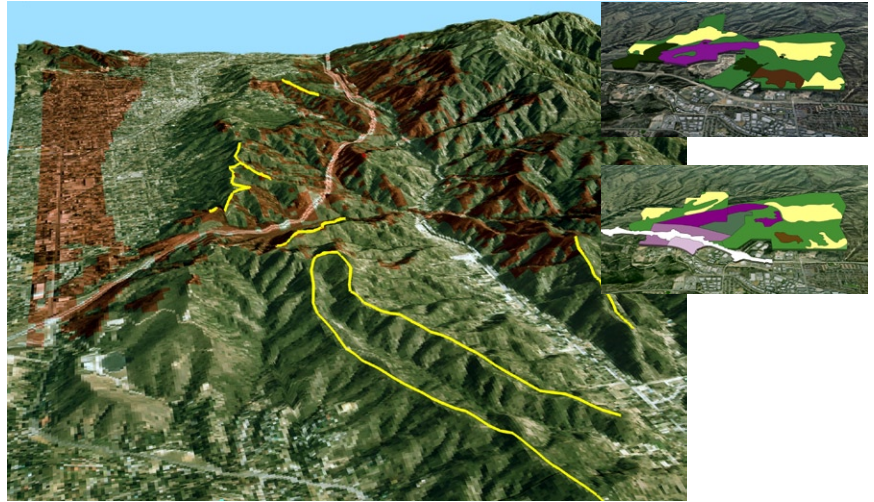
FORMA Systems is using the latest GIS technology for visual analysis to provide our clients with a better understanding of the real-world environment and landscape. Data is analyzed within the GIS system to produce high-level 3D modeled landscapes for various land planning projects.

Within the Canyon Hills project, a visibility, viewshed, and slope analysis was used to determine the best location for developable areas within the project site. As well as the visibility and viewshed analysis, slopes were analyzed to assess product quantity and suitability for planned residential development.

Canyon Oaks, a project within the City of Glendora, required an average slope analysis to determine unit quantity based on General Plan requirements. Another analysis was performed combining 3D modeling with draped ortho-photography and land use to visually recognize potential developable areas.

In addition, we have created 3D models representing illustrative draping, line-of-sight analysis, and viewshed analysis for the Tejon Ranch Company. We incorporated GIS data within the models for creating and viewing "what-if" scenarios. These modeled scenarios and analysis were supplied to the clients through maps and reports to stimulate interest for future phases of the project.

Through the use of visual analysis and 3D modeling, FORMA Systems can provide our clients with real-world perspectives and results for making better decisions that effect entire communities.



- 3D Modeling**
- GIS Visualization**
- Line-of-Sight Analysis**
- Real-World Landscape Scenes**
- Viewshed Analysis**
- Visibility Analysis**

